

PlugLink® 9850

IP Camera with Pan and Tilt



Home Video Surveillance... It's Easier than You Think.



PlugLink® 9850 IP Camera

Security for Home or Office in a Snap.

The PlugLink® 9850 IP Camera from Asoka® is a fully featured surveillance system for any home or office. Using the latest Powerline technology, the PlugLink 9850 IP Camera requires no new cabling. It turns existing electrical wiring in a home or office into a network super highway—making installation of the PlugLink 9850 IP Camera a snap. Connecting additional PlugLink 9850 IP Cameras around the home or office is as simple as saying: “Plug In and Connect™.”

Fast, Reliable, Secure

The PlugLink 9850 IP Camera delivers speeds up to 85 Mbps over existing home or office electrical wiring and provides 56-bit DES encryption. Using an advanced modulation technology known as Orthogonal Frequency Division Multiplexing (OFDM)—a technique similar to DSL—the PlugLink 9850 IP Camera operates at much higher frequencies than normal home appliances, so home or office security surveillance will never be jeopardized by interferences.

Eyes on the World

With the PlugLink 9850 IP Camera, live video can be seen from anywhere in the world using a Windows® Media-enabled Internet browser—even on any web-enabled cell phone or PDA. The PlugLink 9850 IP Camera is extremely intuitive, allowing a single camera or multiple cameras to be viewed through one window. The camera can even be panned or tilted remotely with the click of a mouse. The PlugLink 9850 IP Camera provides the power to “see all and know all”—even from far away.

Command Center

The PlugLink 9850 IP Camera is bundled with a powerful intuitive utility that provides an integrated command center to manage PlugLink IP Cameras and security surveillance videos. The utility's simple, user-friendly interface allows even the most technology-shy person to master home or office surveillance without reading through stacks of manuals.

PlugLink® 9850

IP Camera with Pan and Tilt



Suitable Applications

- Video surveillance
- Remotely view home or office real-time
- Record events
- Remotely Record on demand
- Save video as file
- Remotely Pan and Tilt

System Requirements

- Windows 98SE OS+
- Mac OS X
- Linux
- Available Ethernet port
- 200 Mhz or faster Processor
- 64MB of RAM
- CD-ROM drive

Standards

- IEEE 802.3, IEEE 802.3x, IEEE 802.1 q
- IEFT RC783, 2131,1889,2326,2327,2526
- HomePlug 1.0
- DDNS

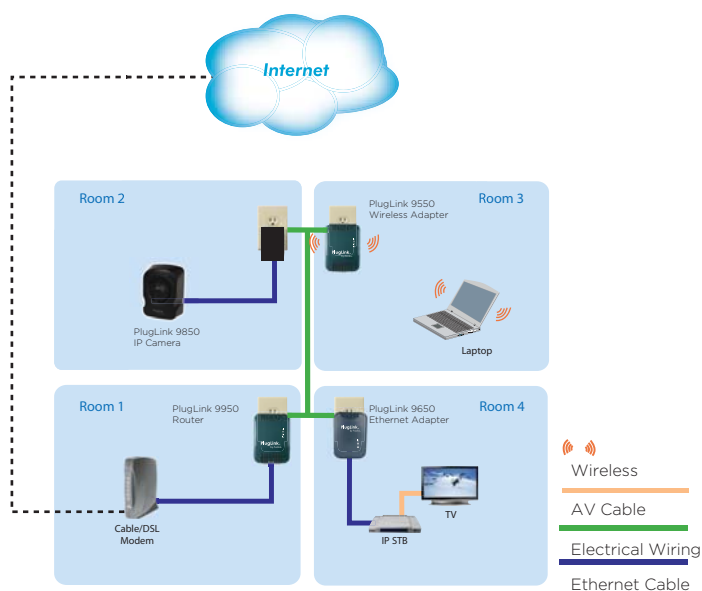
Specifications

- 1/4" CMOS, color sensor
- Sensitivity F2.8
- Focal length F3.6mm
- Auto white balance & gain control
- VGA: 640x480
- QVGA: 320x240
- Fps: up to 18
- Jpeg and motion Jpeg
- Pan X-Y control
- Remote reset
- Power Supply: 100-240VAC
- Safety Regulations: FCC Part 15 regulation, UI, cUL,& CE certified
- 1-year limited Warranty

Package Contents

- PlugLink 9850 IP Camera
- Ethernet cable
- Power Supply
- Warranty & support card
- Resource CD
- Camera Stand

Typical Network Diagram



Available Plug Types:



Asoka USA Corporation
558 Pilgrim Drive, Suite H
Foster City, Ca. 94404
(650)286-1700 phone
(650)286-1790 fax
www.asokausa.com

© Copyright 2007. Asoka USA Corporation. All rights reserved.
PlugLink, PlugLAN, SmartBridge, PowerView, Asoka and the Asoka logo
are either registered trademarks or trademarks of Asoka USA Corporation.